

Print areas management

Create phasing

- [Introduction](#)
- [Drawings management](#)
- [GIS management](#)
- [Areas and axes management](#)
- **[Print areas management](#)**
- [Tasks management](#)
- [Connected objects management](#)
- [Mobile pictograms \(v6 features\)](#)
- [The Gantt chart](#)
- [The Live View \(v6 features\)](#)

The print areas introduced with Phase Manager 4 allow you to define zones on the map that will form the backgrounds for your deliverables.

Types of print areas

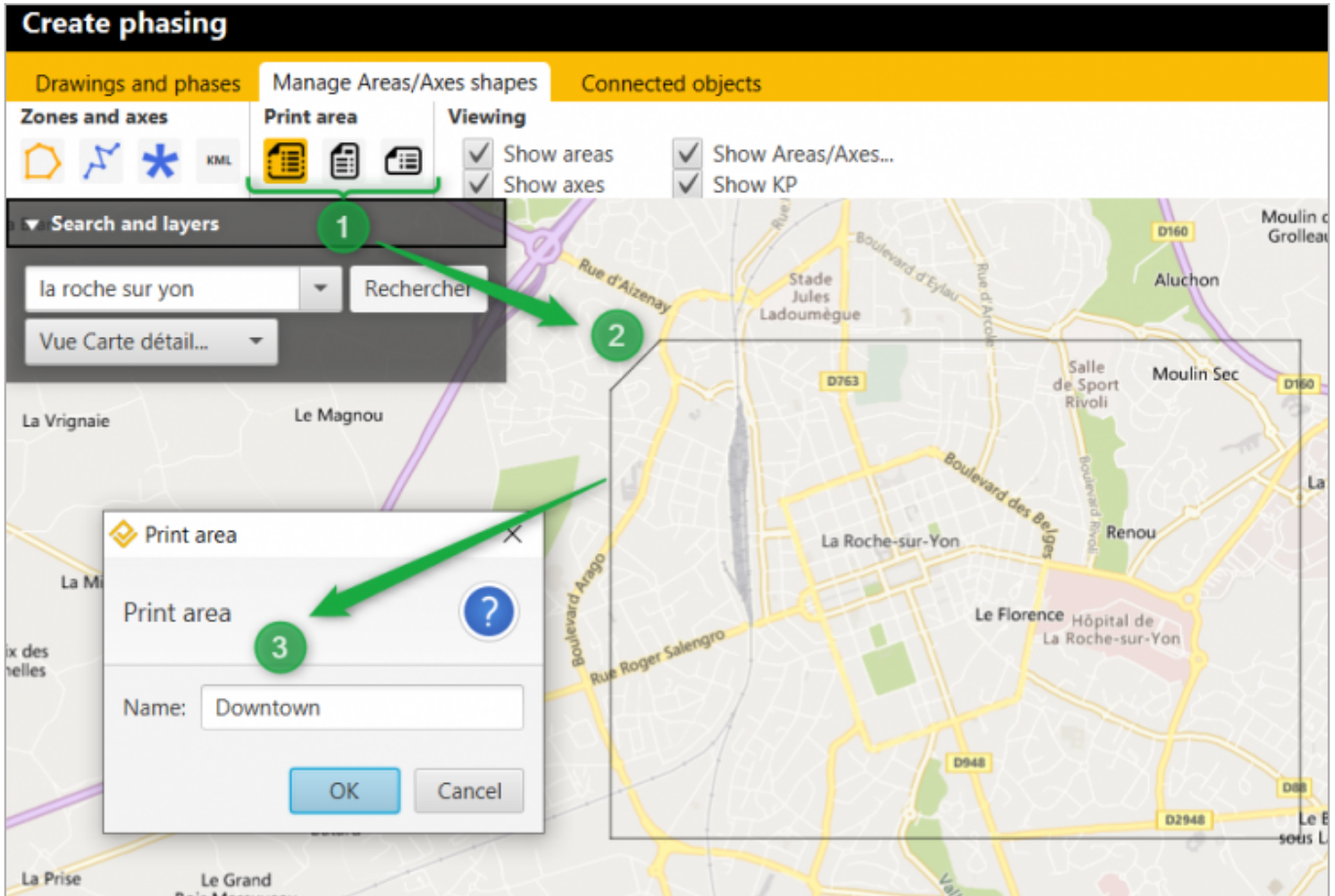
There are three types of print areas:



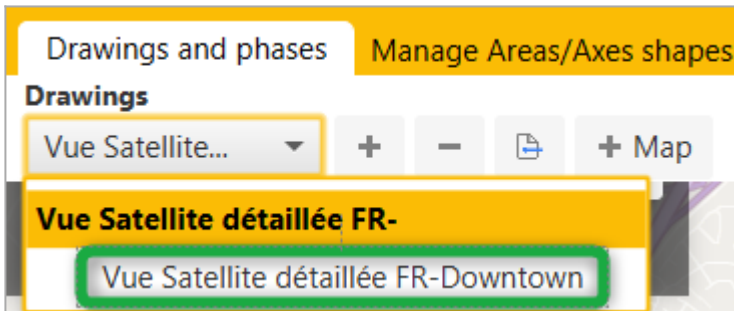
- **(1)** Free proportions
- **(2)** Portrait
- **(3)** Landscape

Defining a print area

To define a print area, click on the button of the desired type and then draw the area. Phase Manager then asks you to name it:



Once the print area zone is named, it appears on the **Drawings and phases** tab in the list of drawings:



Rotation of a print area

In the example above, if you wish to display the downtown pentagon in another direction on the deliverables, it is possible to rotate the area. To do this, simply select the printg area, move the mouse over the red dot, then click and rotate it (keeping the button pressed):

