

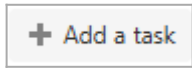
The Gantt chart

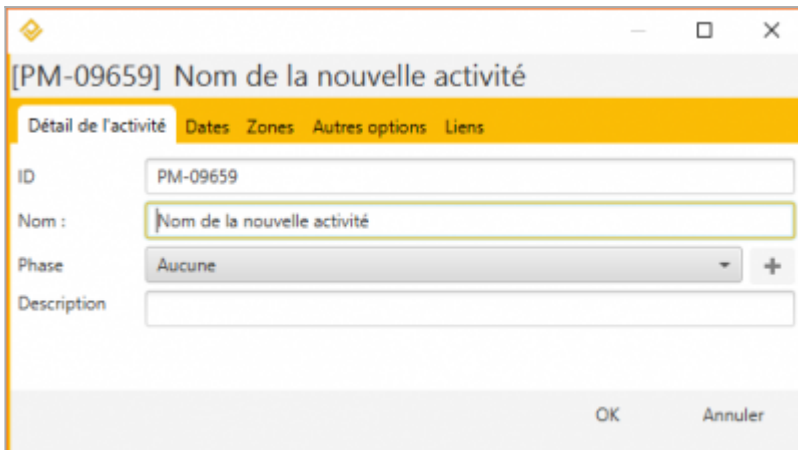
Accessible from the Create phasing window, Phase Manager 3.0 now includes a **dynamic GANTT** that allows you to create, modify and link tasks together.

Note : To view the properties of an task from the Gantt, simply double-click on its bar. To delete a task, *Right-click* → *Delete*

Creating an task

With the button "Ajouter une activité"

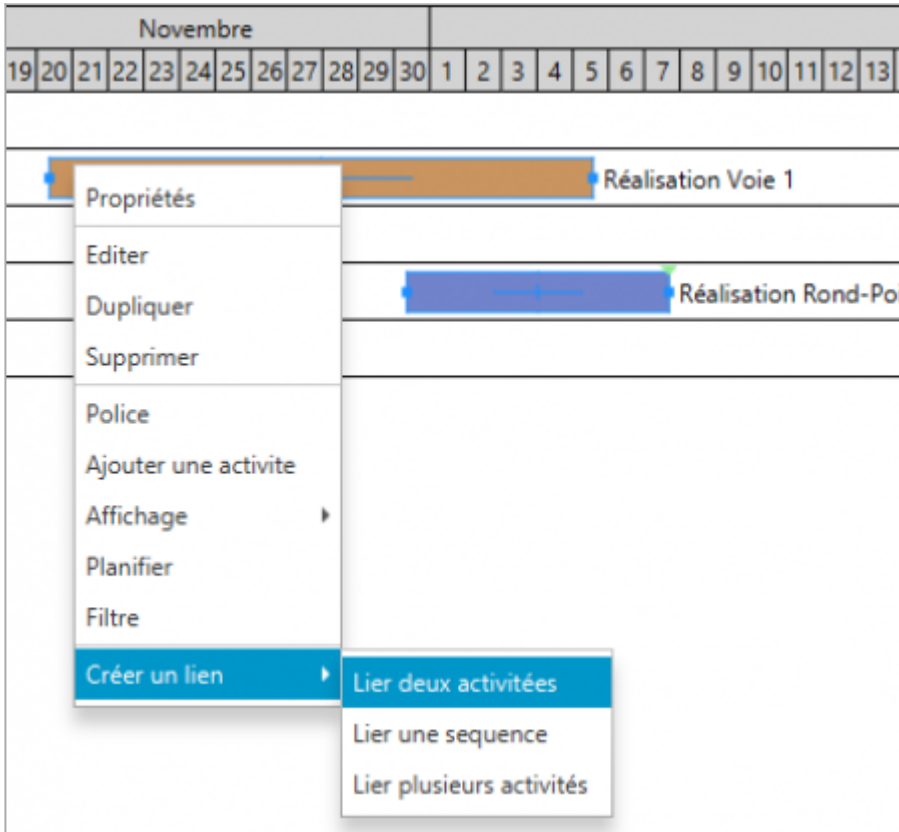
From the Gantt panel it is very easy to create an task by clicking on the button . The blank window of the new task properties is displayed:



Via a right-click in the table

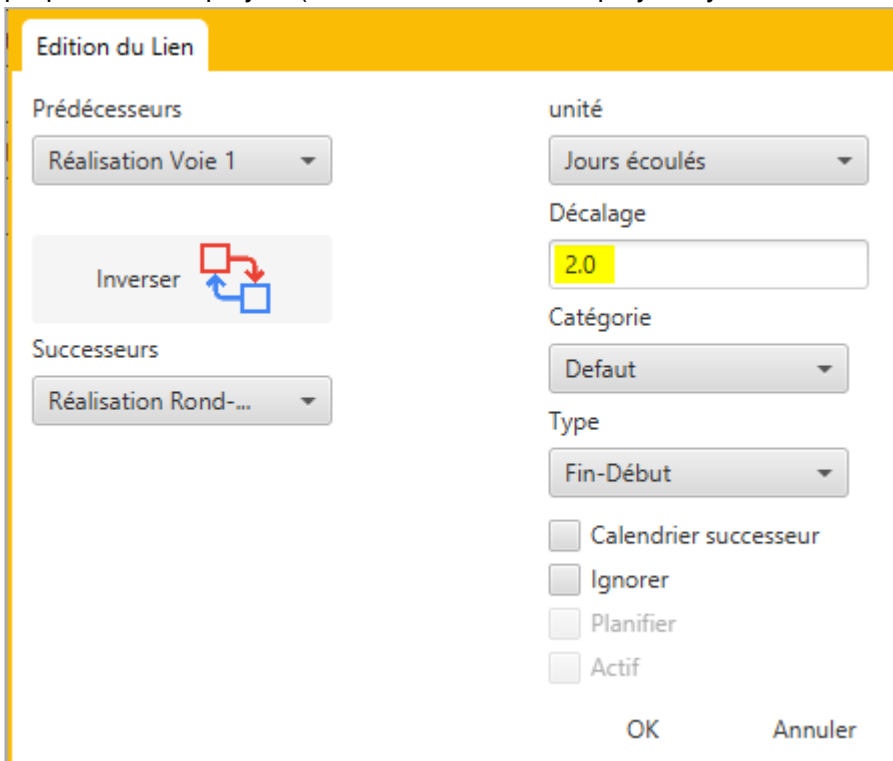
It is also possible to create an task by drawing a segment corresponding to its duration, directly in the table. The advantage of this method is that the start and end dates are pre-filled according to the default calendar, but also that the task inherits the phase where it was graphically positioned (in the case of a phase grouping).

In the example below, in phase 2, a task from December 1 to 7 is plotted; the start date is automatically adjusted according to the default calendar (Monday, December 3): :




The window for editing the link

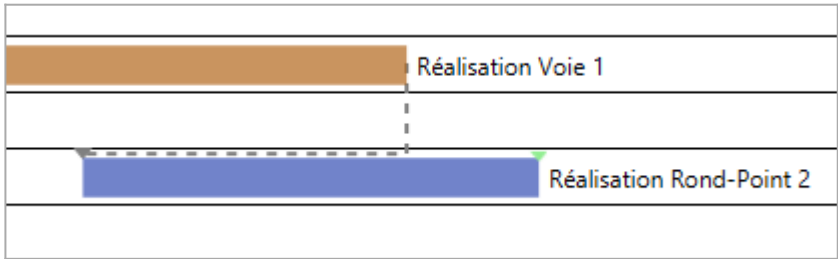
properties is displayed (window that can be displayed by double-clicking on a link):




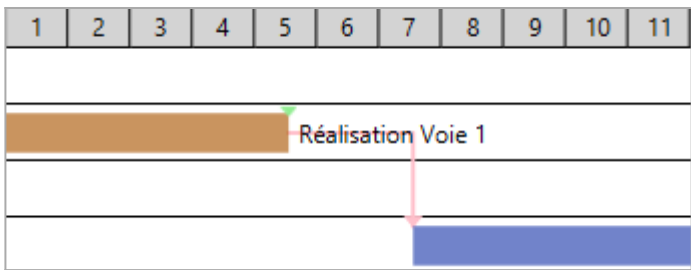
This window allows you to specify the characteristics of the link and in particular its type (Finish-Start, Start-Finish, Start-Start, Finish-Finish), its category (see...), and whether it should use the successor's calendar. In the example above we specified a lag of 2 days..

The button  allows you to switch predecessor and successor !

After clicking on OK, we notice that the link is represented in dotted line, which means that it must be rescheduled (this will always be the case for a new link):



To reschedule the link, click on the button : the link is now displayed as a solid line, and the lag taken into account::



Via the task properties

It is also possible to create a link from the task properties window, by going to the **Links** tab. The Predecessors and Successors of this task can then be informed.

For example, here, we will create a Finish-Start link between the selected task and the “Pavage Voie 2” task, which will be its successor with a Finish-Start link:

Détail de l'activité Dates Zones Autres options **Liens**

Prédécesseurs + Ajouter une activité - Supprimer

Activités	Type	Décalage	unité	Calendrier successeur	Ignorer	Actif	Planifier	
Aucun contenu dans la table								

Successeurs + Ajouter une activité - Supprimer

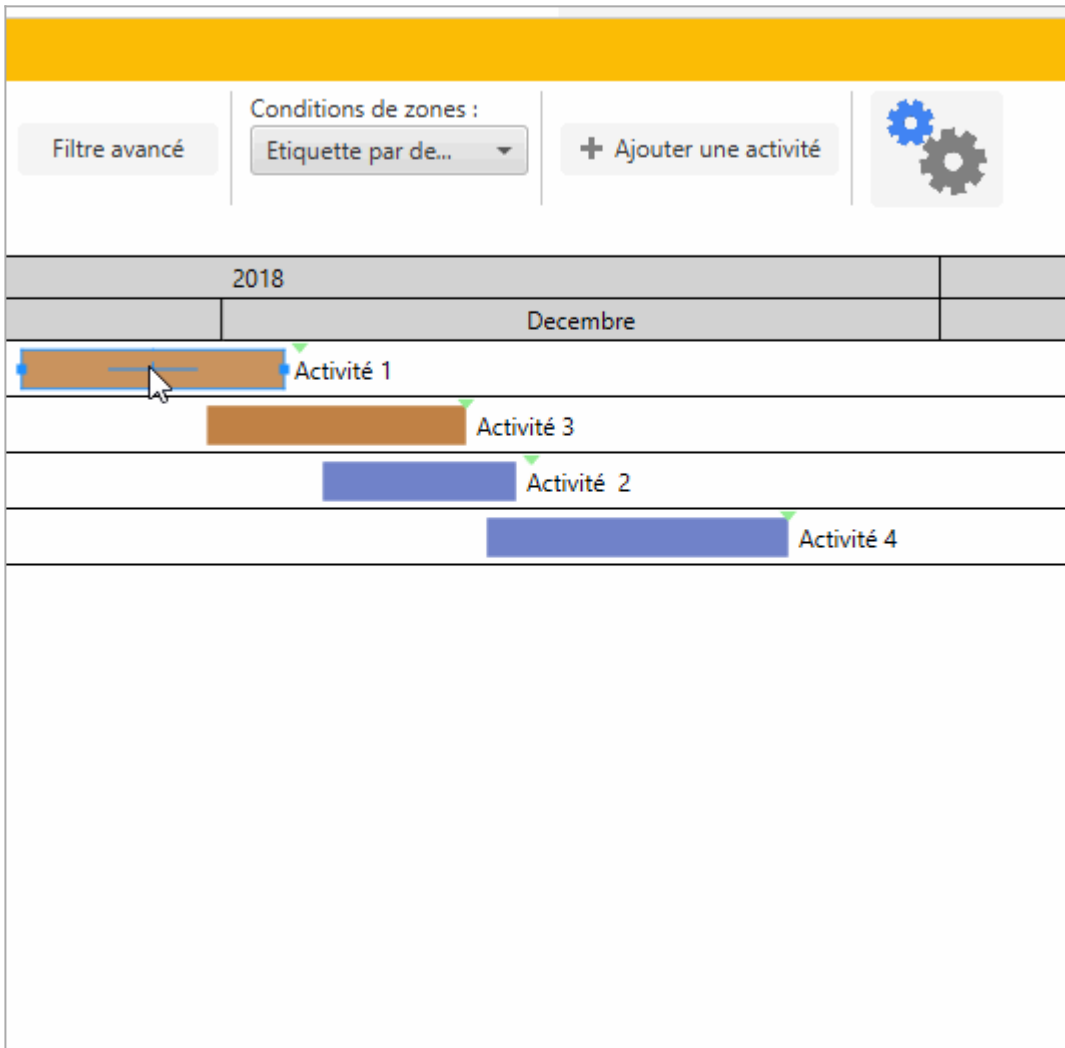
Activités	Type	Décalage	unité	Calendrier successeur	Ignorer	Actif	Planifier	Catégorie
Réalisation Rond-Point 2	Fin-Début	2.0	Jours écoulés	<input type="checkbox"/>	<input type="checkbox"/>	<input checked="" type="checkbox"/>	<input checked="" type="checkbox"/>	De...
	Fin-Début	0.0	Jours écoulés	<input type="checkbox"/>	<input checked="" type="checkbox"/>	<input type="checkbox"/>	<input type="checkbox"/>	De...

Installations de chantier
Pavage Voie 2
Réalisation Rond-Point

OK Annuler

Create a sequence

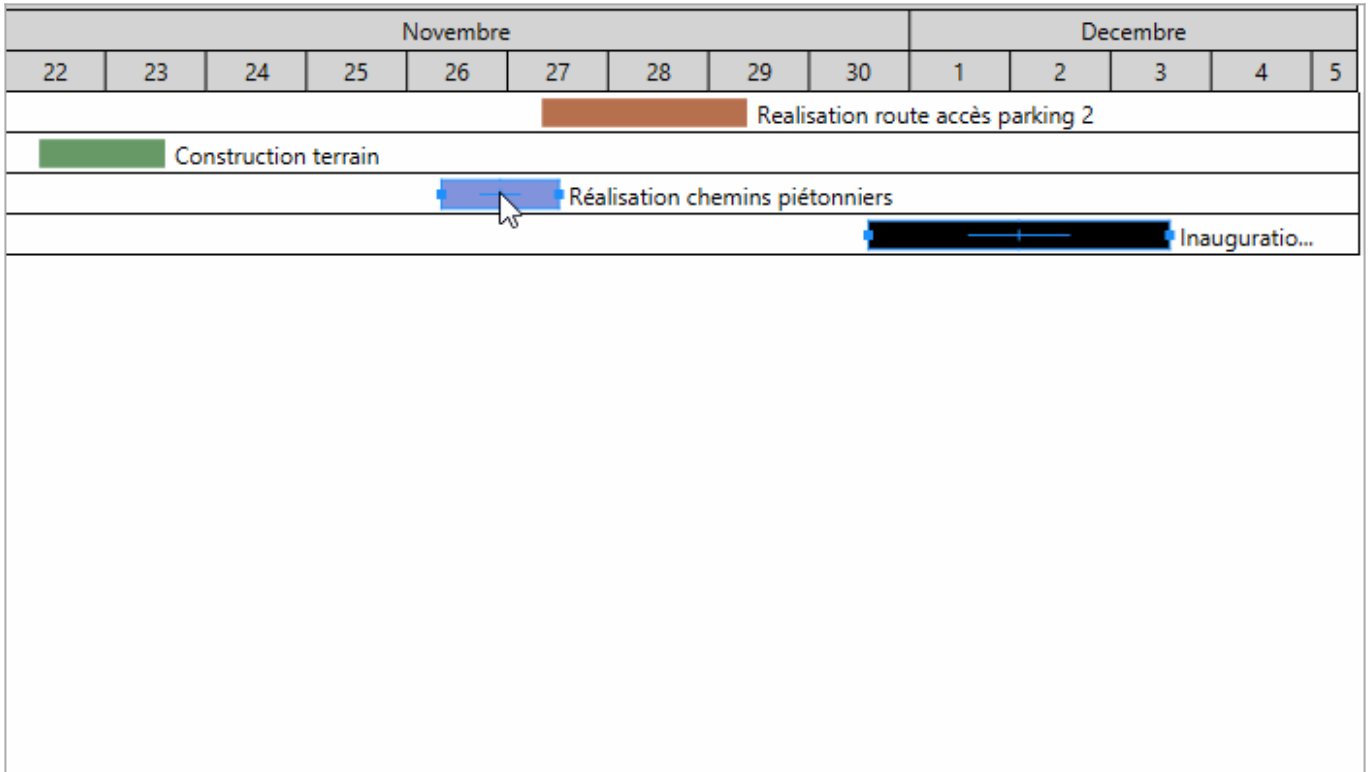
To create a sequence of links, select successively the tasks that make up the sequence (keeping the **CTRL** key pressed) then do a **Right-click** → **Create a link** → **Create a sequence** :



Linking one task to several other tasks

It is also possible to create a 1 to N link: several tasks can be added as predecessors or successors [via l'interface de l'activité](#), but it is also possible to select this task graphically, then all the tasks to which it will be linked, by keeping the **CTRL** key pressed. Then we'll do a right-click > **Create a link** > **Link more tasks**

For example below we create a Start-Finish link between the “Inauguration” task and three previous tasks, with a 2-day lag:

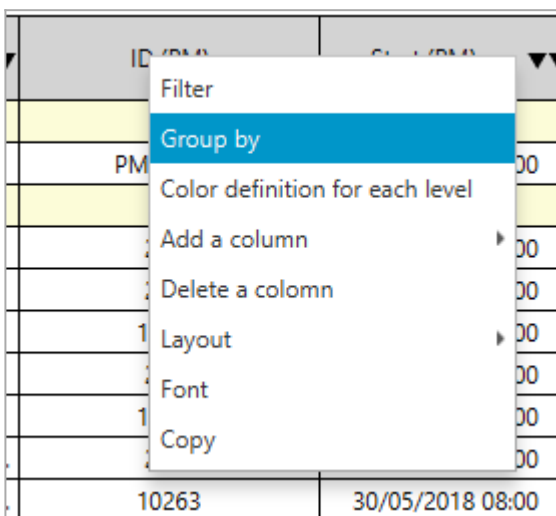


Displaying margins and the critical path Setting up the Gantt chart

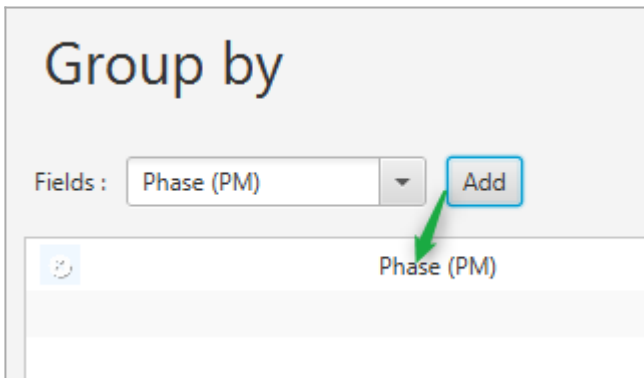
To set the Gantt columns properties, don't forget to double-click first on the Gantt chart.

Grouping tasks

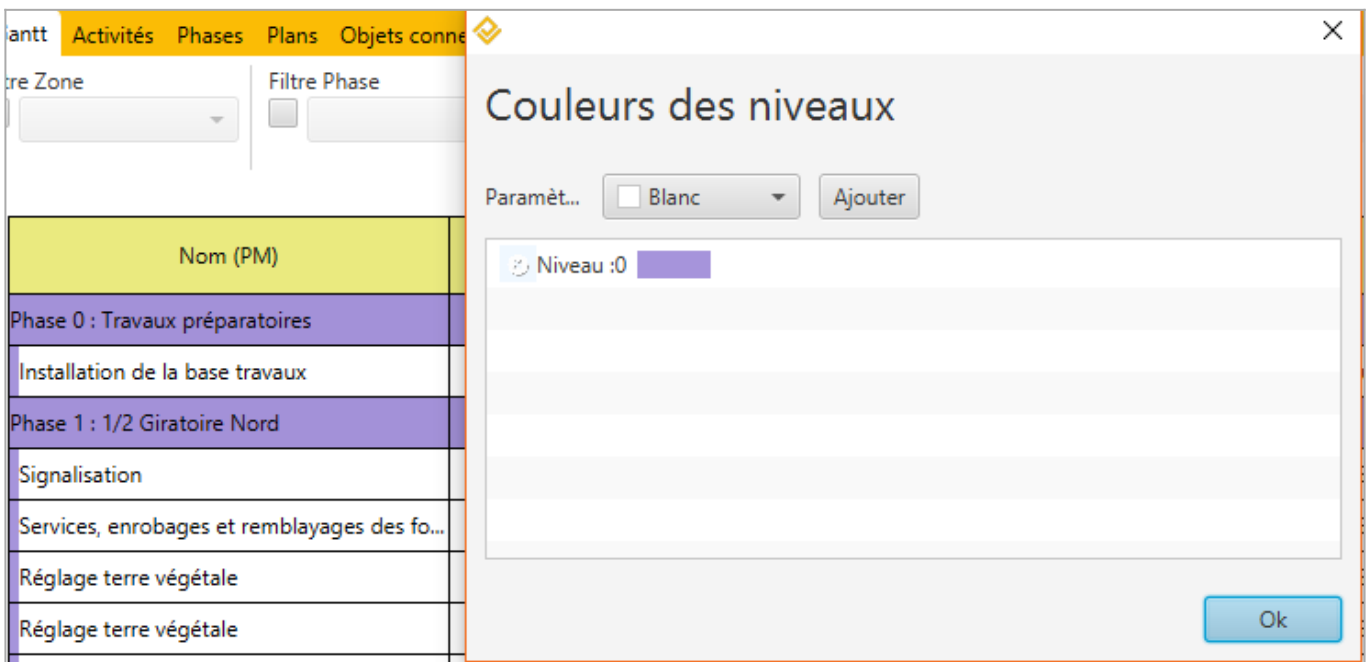
To group tasks, double-click on the Gantt chart, then right-click in the header of the columns then click on **Group by**:



In the window that appears, select the desired successive group levels, then click on OK. For example, here we choose to group the tasks by Phase:



To better highlight the grouping levels, it will be possible to add colors by right-clicking on the column headers and then **Color definition for each level**. The colours of each successive level of grouping will be defined: :



Filtering tasks

The filtering tools are located just above the Gantt. There are three types of filters:

Simple filters : Area and Phase filters allow you to display only the tasks corresponding to a Zone and/or Phase..

Filters based on dates: they allow you to display tasks:

- 'Start' : having a specific start date
- 'End' : having a specific end date
- 'Between' : present in whole or in part within a given time range
- 'Strict' : fully included in a time range

Advanced filters: allow multiple logical combinations to be operated on all available Phase Manager fields (including custom fields).

Sorting tasks

Multi-criteria sorting can be applied to as many columns as desired, simply by clicking on the column headers. For example, below, we clicked once on “Start (PM)” and sorted by increasing start dates:

Nom (PM)	ID (PM)	Début (PM) ▼
Phase 0 : Travaux préparatoires		
Installation de la base travaux	PM-00001	12/02/2018 08:00
Phase 1 : 1/2 Giratoire Nord		
Installations et signalisation	2069	14/03/2018 08:00
Démolition bordures et pavés	2097	22/05/2018 08:00
Démolition bordures et pavés	10207	22/05/2018 08:00

The order (ascending or descending) of the sorting is marked by the direction of the black arrow. If you click a second time on “Start (PM)”, you will notice that the task furthest from the project is in first position, and that the arrow has changed direction (one more click on the header would have removed the filter):

Nom (PM)	ID (PM)	Début (PM) ▲
Phase 6 : Pavage final		
Couche de roulement 3B (Circulatio...	3749	21/02/2019 08:00
Couche de roulement 3A (Circulati...	3777	14/02/2019 08:00
Signalisation et travaux préparatoires	3721	08/02/2019 08:00
Phase 5 : Chaussée Sud		
Revêtements trottoir	3413	25/01/2019 08:00

It can also be seen that the decreasing order of the start dates has logically impacted the order of the phases. To maintain the increasing ordered grouping of phases, it will be necessary to apply two successive sortings:

- click on the column header “Phase (PM)” once
- and for example decide that the second sort criterion will be by decreasing end date, by double-clicking on “End (PM)”:

Nom (PM)	ID (PM)	Début (PM)	Fin (PM) ▲▲	Phase (PM) ▼
Phase 0 : Travaux préparat...				
Installation de la base tra...	PM-00001	12/02/2018 08:00	13/03/2018 16:00	Phase 0 : Travaux préparato...
Phase 1 : 1/2 Giratoire Nord				
Signalisation	2377	22/06/2018 14:10	22/06/2018 16:00	Phase 1 : 1/2 Giratoire Nord
Revêtements trottoir	18859	22/06/2018 09:55	22/06/2018 16:00	Phase 1 : 1/2 Giratoire Nord
Couche de base 3A (Circu...	2321	19/06/2018 08:00	22/06/2018 16:00	Phase 1 : 1/2 Giratoire Nord
Couche de réglage / planie	2293	14/06/2018 08:00	15/06/2018 16:00	Phase 1 : 1/2 Giratoire Nord

The number of arrows indicates the level of the sort criterion (here it is first by Phase, then by End date). Note that it is possible to position as many criteria as necessary.

Adding/removing/moving columns

To add a column, **Right-click** on a header > **Add column** : after selecting the field to display, the new column will be inserted to the right of the column on which you clicked. To delete a column, simply **right-click > Delete column** on the column to be removed. Finally, **to move a column**: a simple drag and drop on its header allows you to change its position.

Changing the font

Changing line height

Changing the height of a line is done simply with the mouse by pulling the resizing arrow. To reflect the height of a line to the entire table, **right-click > Reproduce line size** :

Nom (PM)	ID (PM)	Début (PM)
Phase 0 : Travaux préparatoi...		
Installation de la base travaux	PM-00001	12/02/2018 08:00
Phase 1 : 1/2 Giratoire Nord		
Signalisation	2377	22/06/2018 14:10
Couche de base 3A (Circula...	2321	19/06/2018 08:00
Revêtements trottoir	18859	22/06/2018 09:55

Default settings

The Gantt default settings are inherited :

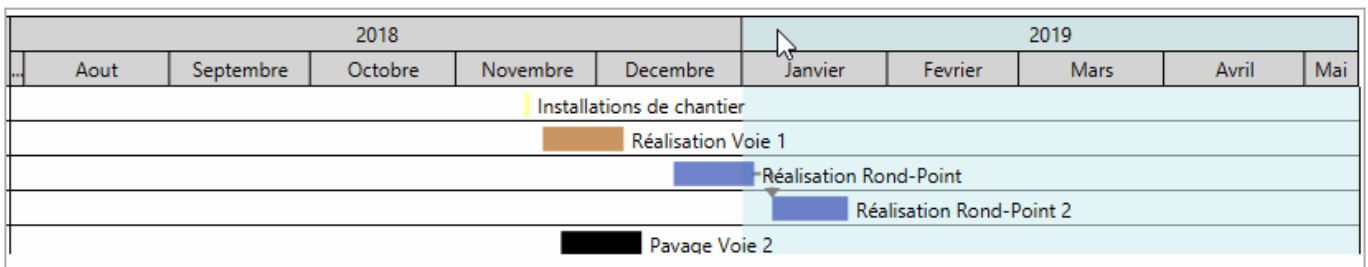
- for the choice of columns: from the Gantt chart in “Create phasing”
- for annotations on or next to the bars: from the **Options** → **Properties** menu then the “**Gantt chart**” tab

Setting up the bar side of the Gantt chart

Adjusting the time range

The time range displayed in the GANTT is very easily managed with the mouse:

- the zoom in or out is done with the mouse wheel after clicking in the GANTT.
- a zoom is performed by selecting a range in the header.
- the entire GANTT headband can be slid sideways by clicking and dragging.
- the **Adjust time scale** function accessible via the header allows you to display all tasks within the current range.



Adding a timeline

The addition of a timeline is done by right-clicking on the timeline that will be located above the inserted line.

